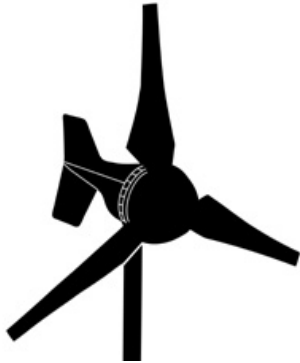
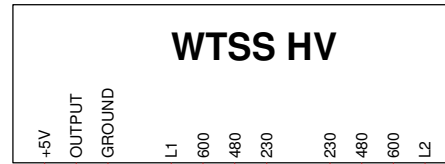


Wind Generator, 3 Phase AC Output

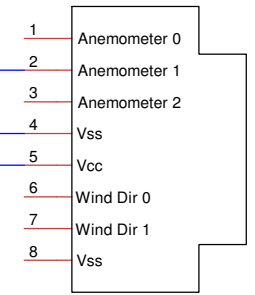


1 A
2 B
3 C

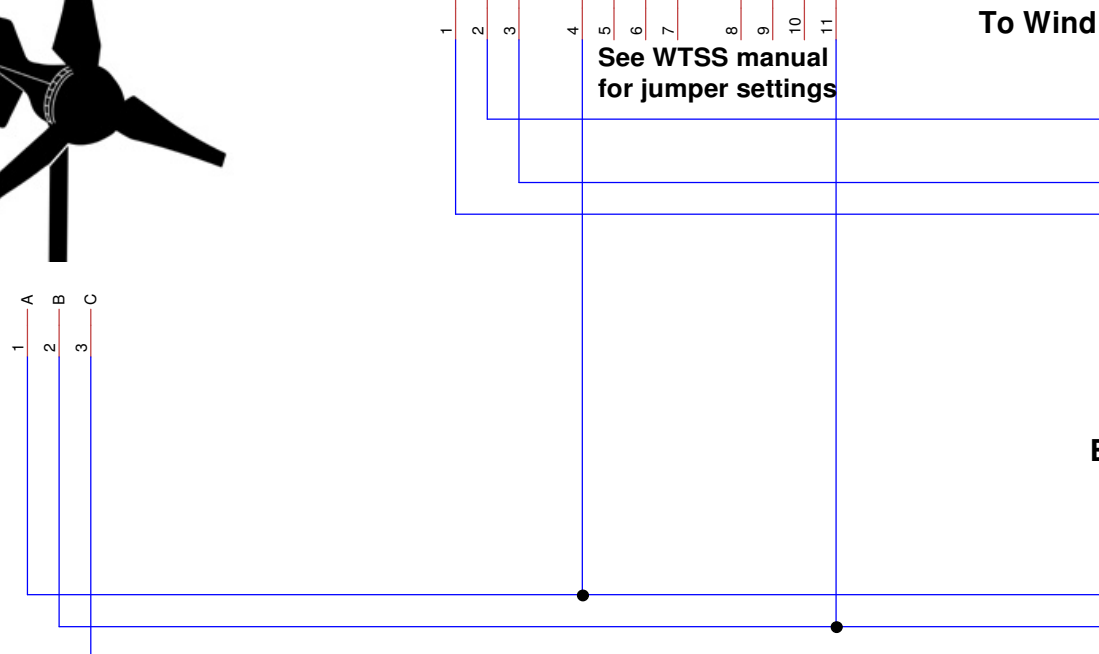
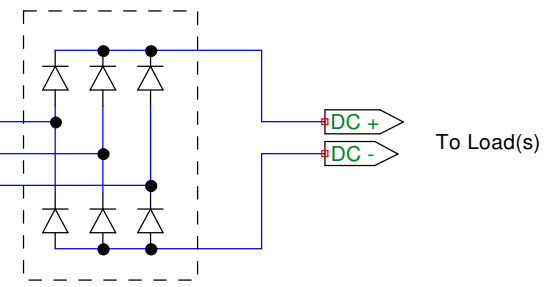


See WTSS manual for jumper settings

To Wind Data Logger / Production Logger



Bridge Rectifier, 3 Phase



Title WTSS Example Circuit		
Author James Jarvis APRS World, LLC		
File :ktop\projects\hookupDiagrams\wtssExample.dsn	Document	
Revision 1.0	Date 2009-01-06	Sheets 1 of 1